



DANCER

# DANCER electric bus FC75 technical specification

The copyright belongs to UAB "Vėjo projektai". All rights reserved. Without the consent of the company, it is forbidden to publish and share the information contained in this presentation.

# DANCER Innovations

Combining trusted industry-leading technologies with the discoveries of our scientists and engineers allows us to create and improve DANCER's technical superiority

Online monitoring system

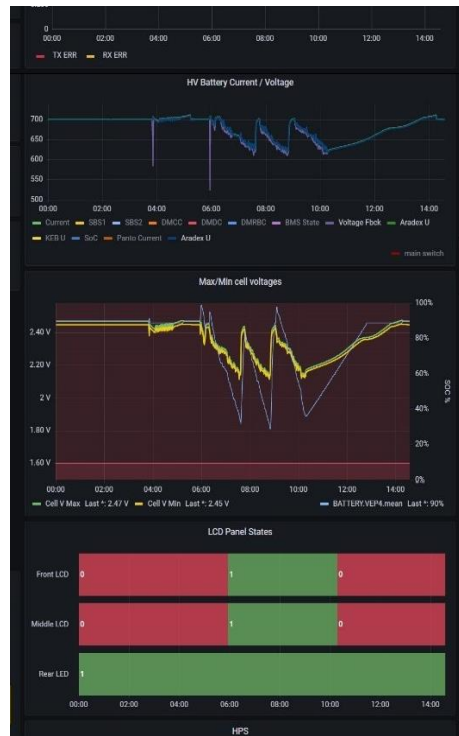
Amenities for passengers

Innovative driver's seat

Rear screen

Uniquely shaped front and rear glass

Pantograph charging connector



Used to collect information, monitor the accuracy of operations and online Renewals.

Comfortable and easy driving with Wi-Fi and a dozen USB sockets, an automatic wheelchair ramp

A modern, easy-to-apply and innovative dashboard that is rated as one of the best that exists on the market.

Multifunctional rear screen with the ability to show traffic in front of the bus to other drivers in order to increase traffic safety.

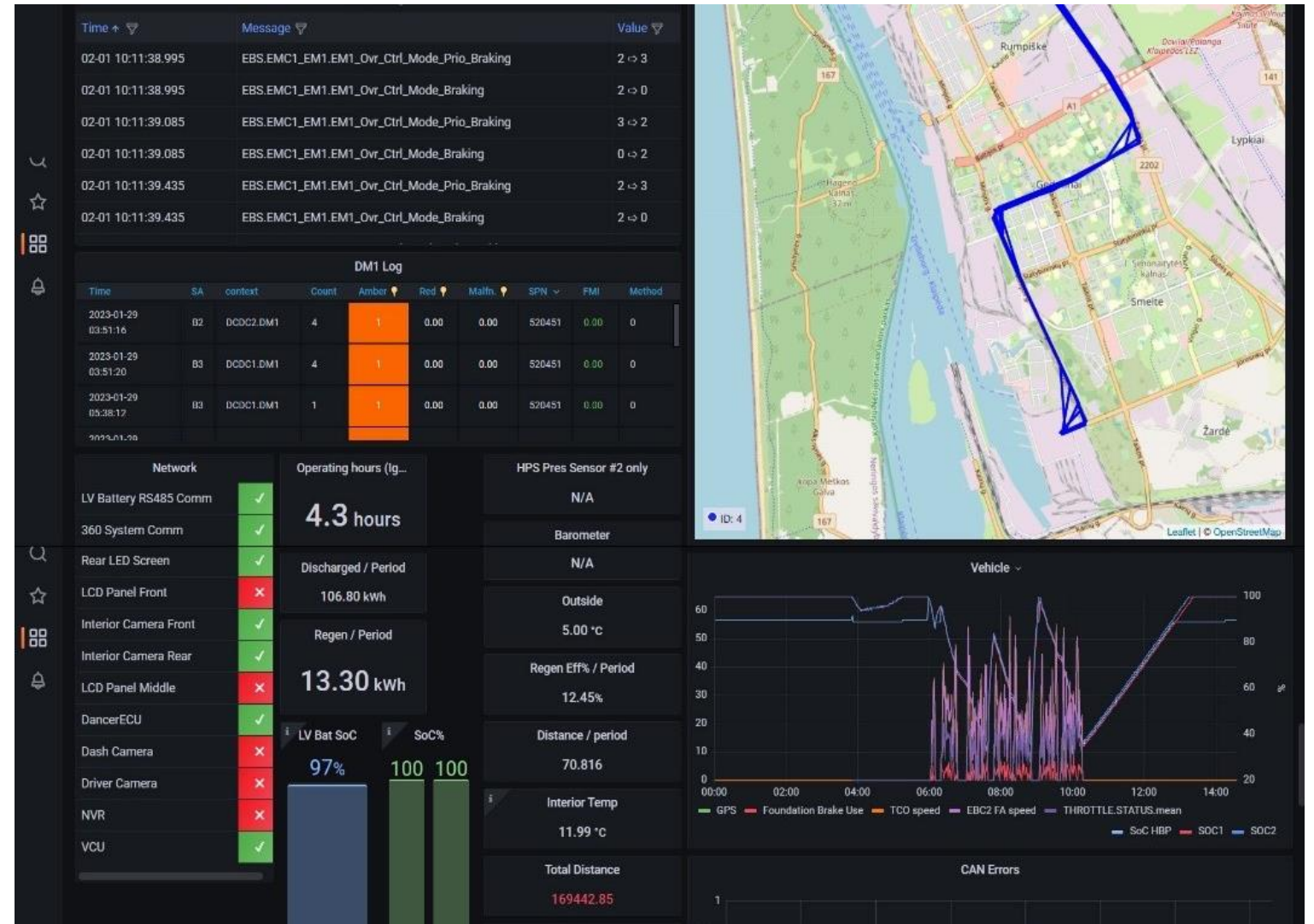
Oval-shaped glass with curved front and rear parts increases the aerodynamics, visibility of the bus, gives a more spacious feel

500kW ultra-fast battery charging at the end of the route allows you to charge the batteries in less than 8 minutes.

# DANCER Online Monitoring System (DMS)

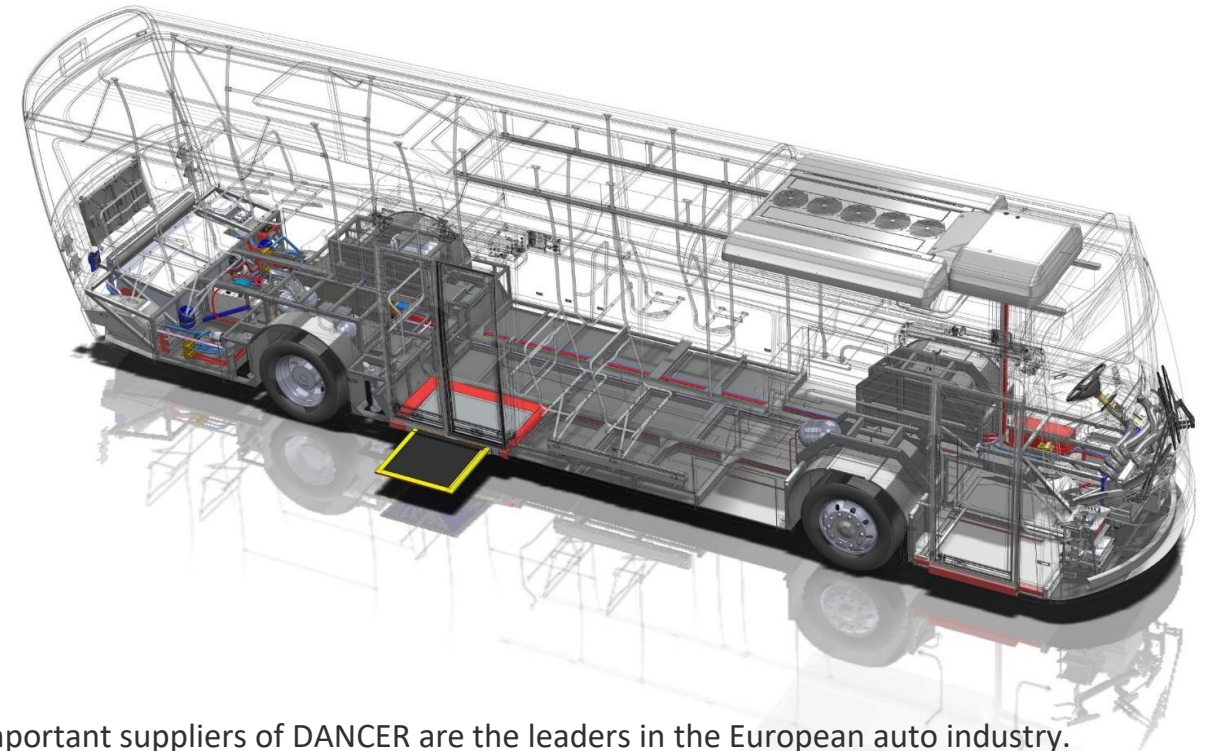
Telemetric monitoring software installed on each DANCER bus model that monitors important information from the bus device and equipment.

- Created and programmed by the DANCER team.
- The data collected by the DMS is stored in the DANCER databases and can be further processed to draw diagnostic conclusions about the operation of the bus.
- 1000 signals coming from each bus every 2 milliseconds
- By analyzing the collected data, it is possible to optimize the interoperability of bus systems, reduce electricity consumption, improve driving comfort, as well as increase the efficiency of equipment.
- DMS value:
  - Predictive diagnostics
  - Real-time data remote monitoring
  - Calibrate devices in real time
  - Large data collection and analysis
  - Emergency stop



## Technical data DANCER is the most environmentally friendly and technically advanced electric bus currently on the market

|                             |   |
|-----------------------------|---|
| <b>Model</b>                | DANCER ® city bus, FC75   |
| <b>Design</b>               | Protected by an EU intellectual property patent (Certificate Nr: 006644639-001)   |
| <b>Maximum speed</b>        | 85 km/h   |
| <b>Range</b>                | The distance traveled on a single charge is up to 100 km.   |
| <b>Charging station</b>     | Inverted pantograph, charging power: 500 kW<br>Optional : CCS2 charging 180 kW max<br>Charging time: <b>less than 8 min</b> |
| <b>Battery</b>              | 75 kWh , LTO - Lithium Titanate   |
| <b>Energy consumption</b>   | 0,72 kWh/km   |
| <b>Number of passengers</b> | 34 seats + 56 standing places or 34 seats + 52 standing + 1 disabled seat   |
| <b>Weight</b>               | 8600 kg   |
| <b>Amenities</b>            | Climate control system, USB for passengers, Wi-Fi, electric ramp, rear screen, night vision 360° video camera, 5G           |



The most important suppliers of DANCER are the leaders in the European auto industry.



The body components are supplied by the Kaunas company Marex Boats. The raw material used to produce recycled PET bottles .

## Technical data DANCER is the most environmentally friendly and technically advanced electric bus currently on the market

|   |  |
|---|--|
| <b>Model</b>                                  | DANCER ® city bus, FC75  |
| <b>Dimensions</b>                             | 12.1 / 2.5 / 3.2 m   |
| <b>Body</b>                                   | Composite  |
| <b>Door</b>                                   | Ventura, front – 900 mm / middle – 1200 mm / rear - on request   |
| <b>Adapted for people with disabilities:</b>  | 1 disabled person's seat, electric ramp with call buttons. Additional information system   |
| <b>Steering</b>                               | Electrohydraulic power steering  |
| <b>Main brakes</b>                            | Knorr disc brakes / part of the ZF axes  |
| <b>Package of safety and driving systems:</b> | ABS – anti-lock braking system / TCS – traction control system / EBS3 – electronic brake system / ESC – electronic stability control / ASR – anti-slip regulator / HAC – hill start control / OptiTire – tire pressure monitoring system / brake assistant / regenerative braking / Brake wear sensors |
| <b>Suspension leveling system:</b>            | ECAS air suspension with kneeling functions: kneeling on its side / full kneeling  |
| <b>Axles and transmission</b>                 | ZF RL 82 EC/ ZF AVE 130  |



A' Design Award 2020  
Golden Award in the category of  
vehicle, mobility and transport design

## Do you have a question?

We're here to talk about electric buses, technical specs, service 24/7 and more.

You can contact our sales manager via phone and email.

[info@dancerbus.com](mailto:info@dancerbus.com)

+370 464 10506

<https://www.dancerbus.com>

